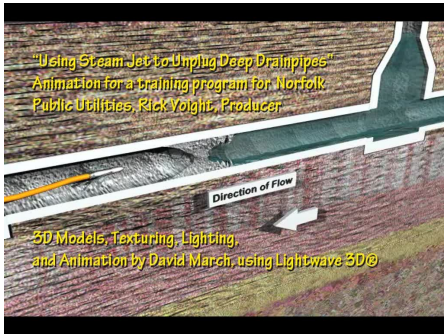


Unblocking a Storm Drain.mp4

Step by Step Instructions

STEP 1) Clearing an Underground Storm Drain Blockage



This Lightwave 3D sequence is one of a dozen I designed as part of an instructional video showing Norfolk Public Utilities workers how to deploy a Steam Hose and Nozzle to clear blockages in Storm Drains.

The Blockages result from congealed grease that people have poured down their sinks. The grease clings to the interior surfaces of the storm drain pipes, which can be placed at depths of 40 feet or more below ground level. Then the grease can capture objects that have been washed into the drains by rain water ==> grass, pebbles, twigs, toys, clothing, newspaper, et cetera. These gradually accumulate and constrict or even completely block the drain.
