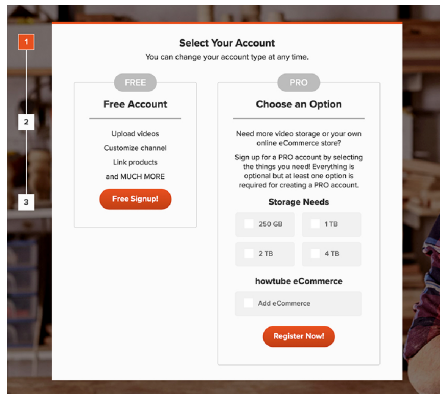
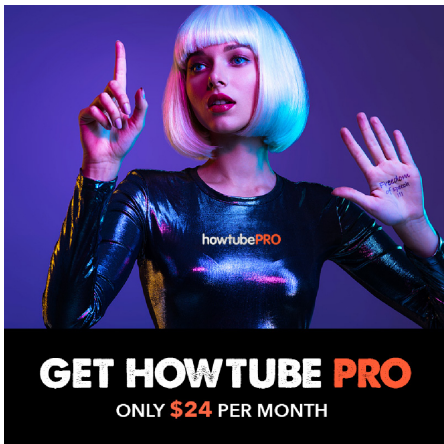




The howtube® Donations Feature - what it is and how it works.

Step by Step Instructions

STEP 1) You Need A howtubePRO Account



All premium features on howtube are available in one place; we call it **howtubePRO**, and it's for content creators. With one, powerful PRO account – for only \$24 per/mo – you can start accepting donations from people all around the world and do so much more... You can:

howtubePRO

Video hosting with eCommerce

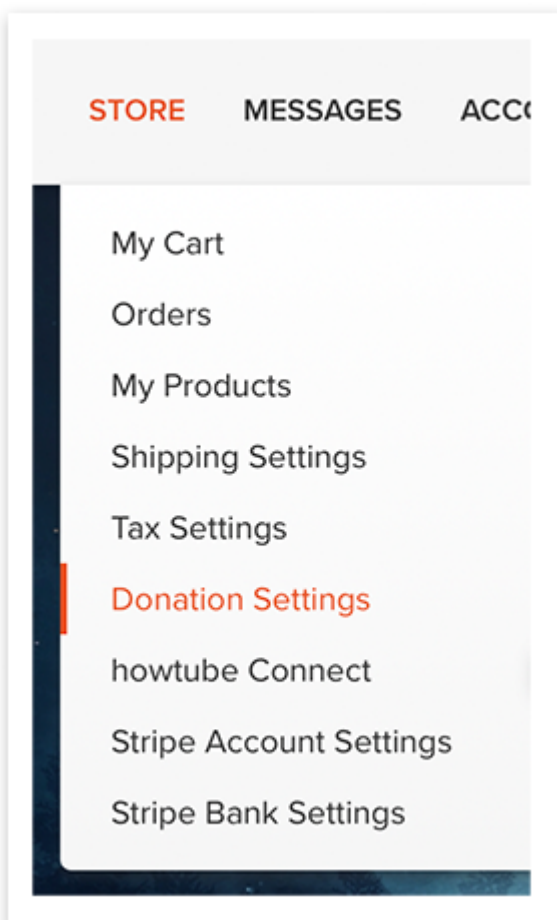
- Accept donations from supporters internationally
- Gain full access to howtube's proprietary eCommerce software
- Sell physical products internationally w/ shipping
- Sell any, digitally formatted, downloadable product
- Sell individual videos behind a paywall
- Group videos into focused, categorized **Video Series**
- You can make **Video Series** Free, or you can...
- Sell **Video Series** as a subscriptions or a one-time fee

- You can also create a **Video Series** that contains all of your "premium, paid content" and sell it as a "**Full Access, Monthly Membership**"
- Process all credit card transactions internationally

LINK - [GET STARTED / SIGN UP NOW](#)

STEP 2) Navigate to "DONATIONS SETTINGS"

Make sure you're logged into your howtubePRO account, then navigate to: **Store / Donations Settings ...**



STEP 3) Turn Your Donation Feature On With One Click

Click this button to activate your donation feature:

Donation Status

Turn the donation section of your channel on and off with the toggle below.

× Donations Off



« click this.

Donation Status

Turn the donation section of your channel on and off with the toggle below.

✓ Donations On

Be sure to save your settings below

STEP 4) Add Some Information About Your Donation Policy

In this text area provided in "**Donation Settings**", add some information for your supporters about what you'll do with their money. Providing all pertinent content related to your personal or company donation procedures is sure to help.

Here's an example from Randall Carlson's Channel:

